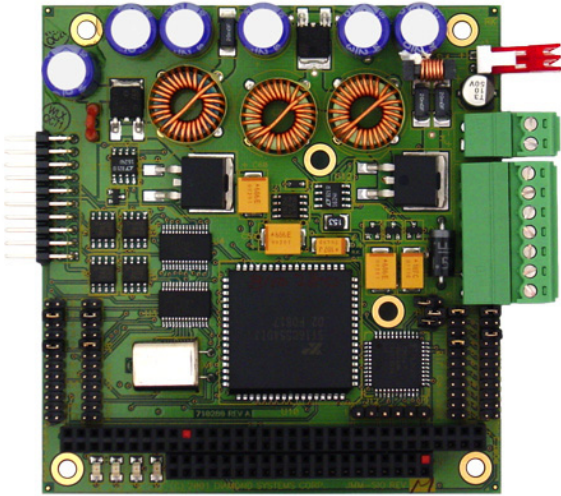


JUPITER-MM-SIO

50 Watt DC/DC Power Supply with 2 Serial Ports



- 50 watts output power power
- +/-5V, +/-12V outputs
- 8-30VDC input range
- Rugged, lightweight design
- 2 serial ports, RS-232/422/485
- -40°C to +85°C operating temperature

DESCRIPTION

Our new Jupiter-MM-SIO PC/104 DC/DC power supply improves on our popular Jupiter-MM product by adding two configurable serial ports. This board combines our JMM-512-V512 and 1/2 of our Emerald-MM-4M on a single board. This 2-in-1 design helps to further reduce cost and size of PC/104 embedded systems and provides a real benefit for air and ground vehicle applications requiring the greatest reduction in size and weight.

ORDERING INFORMATION

Part No.	Description
JMM-SIO-XT	Jupiter-MM 50 Watt DC/DC power supply

FOR MORE INFORMATION

Diamond Systems Corporation
 1255 Terra Bella Avenue
 Mountain View, CA 94043
 Tel: 650-810-2500
 Fax: 650-810-2525
techinfo@diamondsystems.com

SPECIFICATIONS

Feature	Jupiter-MM-SIO
Input voltage	7-30VDC
Transient protection	1500W transient voltage suppressor
Transient cutoff	31V nominal
+ 5v Output	10A
+12V Output	2A
-5V Output	0.1A
-12V Output	0.5A
Output protection	Current limit / short circuit protection
Output ripple	<50mV RMS (+5V output, 50% load)
Load regulation	±3%
Efficiency	80% to 92%, varies with load and input voltage
Dimensions	3.55" x 3.775" (90mm x 96mm)
PC/104	J1 (64 pins) and J2 (40 pins) stackthrough connectors installed
Operating Temperature	-40°C to +85°C
Weight	4.0oz / 113g